



CHARLESTON HOUSE

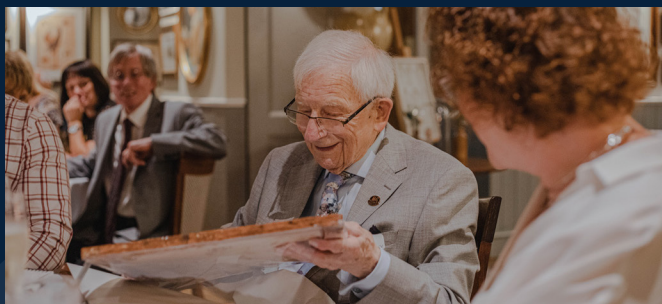
— A SENIOR LIVING COMMUNITY —

PAST



*Every guest has a story of their own. A lifetime of friends, family and experiences.
We want to hear your journey so we can best assist you.*

PRESENT



*A change in your health, is a change in your life and mindset.
We understand your world just shifted and we're here to assist you.*

FUTURE



Our goal is to give you a bright future filled with friends, comfort & enjoyment. A place you can call Home!

ASSISTED LIVING AT CHARLESTON HOUSE

YOUR HOME

- Cable TV and WiFi Available
- Culinary Nutrition
- Housekeeping & Laundry Services
- Pet Friendly
- Social Interactions
- Spacious Apartments



Orthopedic
Rehabilitation



Post-Surgical
& Medically
Complex Care



Advanced
Cardiac Care



Specialized-Stroke
Recovery Care

YOUR CARE

Charleston House is a residential care community that provides comfort and support to our residents. We understand everyone has different needs. Our amenities and services were designed to accommodate your specific needs and desires. We have everything you need to live life *your* way. And if you ever need assistance, we are here to help.

FOR APARTMENT MODELS AND PRICING:

INFO@CHARLESTONHOUSESENIORLIVING.COM

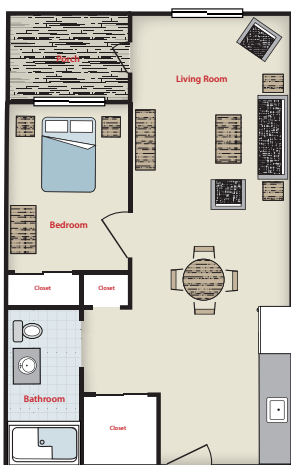
(920) 219-4941

FLOOR PLANS



**Charleston House
Memory Care Studio
(380 sq. ft.)**

**Charleston House
One Bedroom
(580 sq. ft.)**



**Charleston House
One Bedroom Deluxe
(680 sq. ft.)**

MEMORY CARE AT CHARLESTON HOUSE

YOUR HOME

- Art, Garden, Music, and Pet Therapy
- Cable TV and WiFi Available
- Safe and Stimulating Environment
- Social Interactions
- Housekeeping & Laundry Services



Orthopedic
Rehabilitation



Post-Surgical
& Medically
Complex Care



Advanced
Cardiac Care



Specialized-Stroke
Recovery Care

YOUR CARE

Charleston House is an assisted living community providing support to individuals that are in need of dementia services. Our trained dementia professionals share the same priority as you: providing the best possible care for your loved one. Our unique tools and programs allow each resident to maintain a sense of purpose, belonging and quality of life, making us the perfect place to call home.

FOR APARTMENT MODELS AND PRICING:

INFO@CHARLESTONHOUSESENIORLIVING.COM

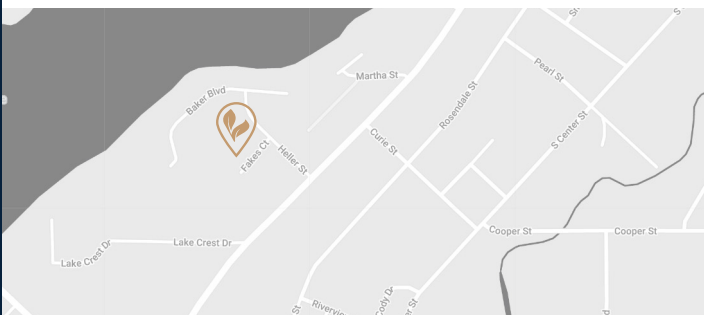
(920) 219-4951



Charleston House is an industry-leading senior living community in the heart of Beaver Dam, Wisconsin. We provide a unique blend of assisted living and memory care services, ensuring each resident gets the care and support they need. Our highly trained professionals are always ready to assist with daily activities and memory care programs. We aim to help each resident maintain independence, purpose, and quality of life.

At Charleston House, we take a personalized approach to care. Our team works with each resident to create a care plan that suits their needs. We provide medication reminders and help with daily activities, allowing residents to focus on enjoying their lives to the fullest. Our memory care programs are specifically designed to promote brain health and well-being. Our residents are like family to us, and we strive to provide them with the highest quality of care and support. At Charleston House, we aim to help each resident achieve optimal health and happiness.

**TO SCHEDULE A TOUR & ALL ADMISSIONS
INQUIRIES - CALL US: 920-219-4941**



Assisted Living
104 Fakes Ct.
Beaver Dam, WI 53916



Assisted Living: (920) 219-4941
Memory Care: (920) 219-4951
F: (920) 356-9221

Memory Care
129 Evergreen Ln.
Beaver Dam, WI 53916



info@charlestonhouseseniorliving.com



charlestonhouseseniorliving.com